

# WisdomPack for Enterprise Storage and WisdomPack for Software Defined Storage (SDS)



## Correlate storage behavior with application performance for Enterprise Storage and WisdomPack for SDS

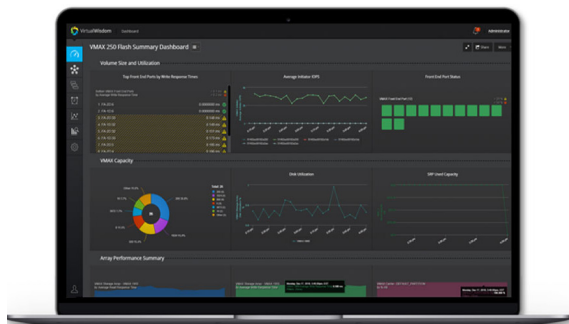
VirtualWisdom® WisdomPack for Enterprise Storage is a key building block of your full-stack infrastructure monitoring and analytics platform.



Figure 1: Single pane of glass view of compute assets onpremise and in the public cloud.

## WisdomPack for Enterprise Storage and WisdomPack for SDS

- Brings storage insight out of the shadows and into the limelight of your full stack monitoring platform
- Understands how your application workloads stress your storage resources
- De-risks application service delivery on shared storage



## Challenges Faced by Application, Infrastructure and Storage Teams

### IT assets are dispersed

- Some workloads run on-premise using SAN attached storage, others use storage virtualizers, still others rely on software defined storage or Hyper Converged Infrastructure

### Visibility is limited

- Native monitoring tools do not have the heterogeneous view needed to understand your entire infrastructure
- Data fidelity and application awareness are universally lacking in most vendor monitoring tools

### Monitoring tools are vendor specific

- Each storage vendor provides element managers for provisioning and monitoring their own storage array but visibility across other vendor products is either lacking or non-existent

### No single pane of glass for monitoring all assets

- Siloed infrastructure monitoring tools create expensive war room situations and increase MTTR
- What is missing is a single dashboard that cross-correlates metrics from compute, switching and storage with an application perspective to derive meaningful insights for running the business at peak efficiency

## VirtualWisdom WisdomPack for Enterprise Storage and WisdomPack for SDS provide critical monitoring capabilities for your storage infrastructure

### Application Service Assurance

- Use a single pane of glass to proactively manage and assure application service levels across physical, virtual and cloud-based hosts
- Ensure a seamless interface between the compute and storage layers
- Map applications through the infrastructure to your storage systems in a single topology view
- Identify unintended overlap of shared storage resources between higher and lower tier applications

### Predictive Capacity Management

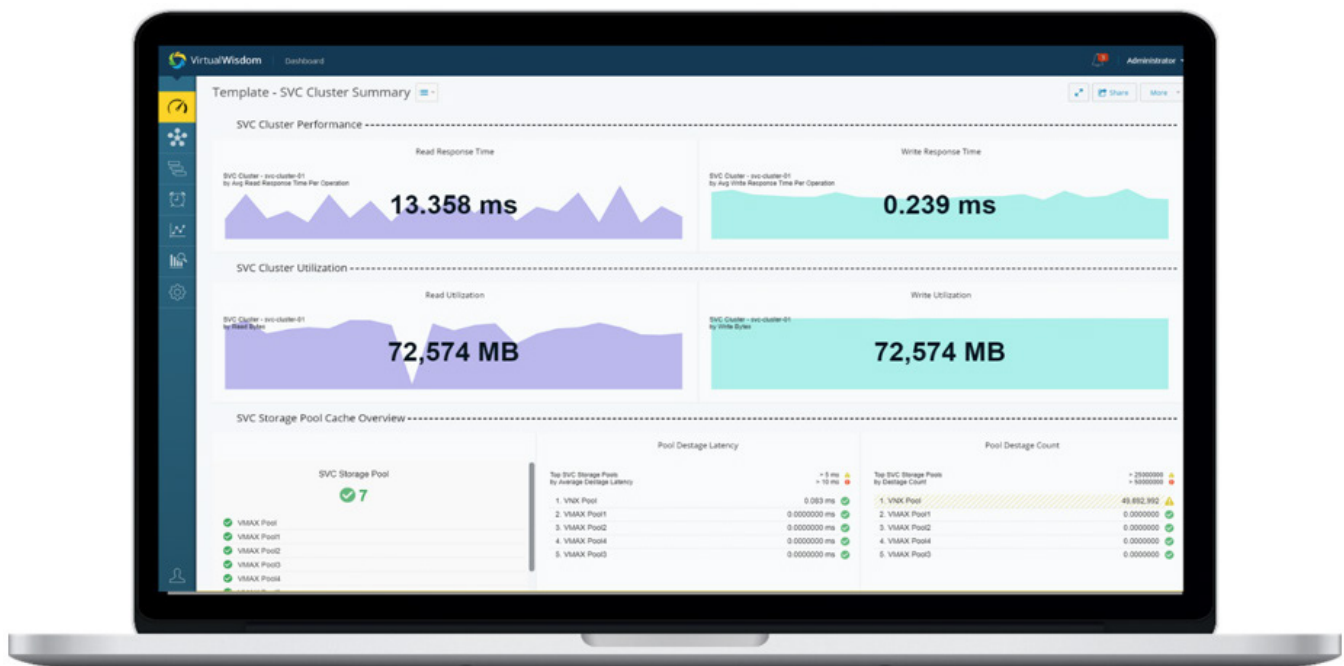
- Predict time-to-zero for enterprise storage or software defined storage

### Workload Infrastructure Balancing

- Analyze how your on-premise workloads behave end-to-end using sophisticated workload balancing algorithms
- Proactively rebalance your infrastructure using the WisdomAI recommendation engine. WisdomAI is the industry leading AIOps and augmented intelligence engine

### Problem Resolution and Avoidance

- Isolate and remediate problems using a run-book style methodology with guided and automated investigations around workflows such as analyzing “noisy neighbors”



## WisdomPack for Enterprise Storage: Key Features

|  | NetApp   | DELL EMC VMAX/<br>PowerMAX                         | Dell EMC Isilon  | IBM SVC  |
|--|--|--|--|--|
| Infrastructure Discovery and Application Mapping | Automatic  | Automatic  | Automatic  | Automatic  |
| Agentless Software-only Monitoring               | ✓  | ✓  | ✓  | ✓  |
| Access Method                                    | API access (cluster-mode ONTAP supporting NFSv3) | API access (to Dell EMC Unisphere storage manager) | API access (to Dell EMC OneFS API ver. 8.0.0 or later) | SSH and FTP (into SVC master node running SVC ver. 7.7.1.8 or later) |
| Health Metrics                                   | ✓  | ✓  | ✓  | ✓  |
| Capacity Metrics                                 | ✓  | ✓  | ✓  | ✓  |
| Performance Metrics                              | NA   | ✓  | ✓  | ✓  |
| Best-practice Alerting                           | NA   | ✓  | ✓  | ✓  |
| Intelligent Problem Resolution                   | ✓  | ✓  | ✓  | ✓  |

|                            | AIOps Driven Analytics        |                                |                                   |                                  |
|----------------------------|-------------------------------|--------------------------------|-----------------------------------|----------------------------------|
|                            | Application Service Assurance | Predictive Capacity Management | Workload Infrastructure Balancing | Problem Resolution and Avoidance |
| Dell EMC VMAX/<br>PowerMAX | ✓                             | ✓                              | ✓                                 | ✓                                |
| Dell EMC Isilon            | ✓                             | ✓                              | ✓                                 | ✓                                |
| IBM SVC                    | ✓                             | ✓                              | ✓                                 | ✓                                |

## WisdomPack for SDS: Key Features

|  | VMware vSAN                             | Dell EMC VxFlex OS<br>(previously ScaleIO) |
|--|---|--|
| Infrastructure Discovery and Application Mapping | Automatic                               | Automatic                                  |
| Agentless Software-only Monitoring               | ✓                                       | ✓  |
| Access Method                                    | API access<br>(to vCenter 6.5 or later) | API access<br>(to ScaleIO gateway)         |
| Health Metrics                                   | ✓                                       | ✓  |
| Capacity Metrics                                 | ✓                                       | ✓  |
| Performance Metrics                              | ✓                                       | ✓  |
| Best-practice Alerting                           | ✓                                       | ✓  |
| Intelligent Problem Resolution                   | Guided Investigations                   | Guided Investigations                      |

|                    | AIOps Driven Analytics        |                                |                                   |                                  |
|--------------------|-------------------------------|--------------------------------|-----------------------------------|----------------------------------|
|                    | Application Service Assurance | Predictive Capacity Management | Workload Infrastructure Balancing | Problem Resolution and Avoidance |
| VMware vSAN        | ✓                             | ✓                              | ✓                                 | ✓                                |
| Dell EMC VxFlex OS | ✓                             | ✓                              | ✓                                 | ✓                                |



[Learn](#) more about VirtualWisdom



[Contact](#) a Virtana Expert



[View](#) more Resources

**Virtana**  
2331 Zanker Road  
San Jose, CA 95131  
Phone: +1.408.579.4000